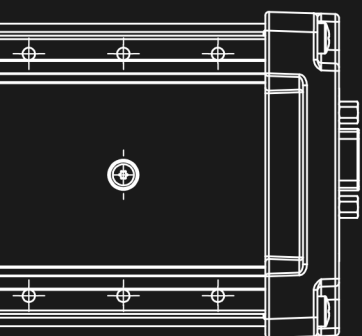
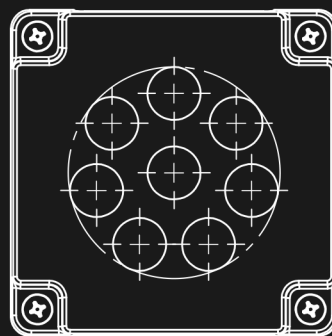
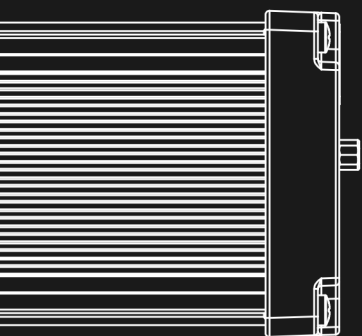
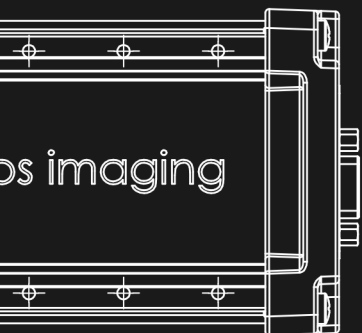




Odos Imaging

StarForm Swift™ Firmware Update Quickstart

Version 0.1.0, May 19, 2017



Trademarks

Unless stated otherwise, all trademarks appearing in this document of **odos imaging Limited**, are brands protected by law.

Warranty

The information provided by **odos imaging Limited** is supplied without any guarantees or warranty whatsoever, be it specific or implicit. Also, excluded are all implicit warranties concerning the negotiability, the suitability for specific applications or the non-breaking of laws and patents. Even if we assume that the information supplied to us is accurate, errors and inaccuracy may still occur.

Copyright

All texts, pictures and graphics are protected by copyright and other laws protecting intellectual property. It is not permitted to copy or modify them for trade use or transfer, nor may they be used on websites.

Contents

1	Contact	1
2	Introduction	2
2.1	Styles and Convention	2
3	Install New StarForm Swift™ Firmware	3
4	Document History	8

1 Contact



Note

Technical Information:

<http://www.odos-imaging.com>

Support:

support@odos-imaging.com

odos imaging Limited

Scottish Microelectronics Centre

Alexander Crum Brown Road

Edinburgh

Scotland

EH9 3FF

Tel: +44 (0) 131 650 7756

Email: info@odos-imaging.com

2 Introduction

This guide provides a step-by-step guide to allow user update of a StarForm Swift™ 3D camera with an in-field update using a simple Windows based GUI programme.

2.1 Styles and Convention

This manual uses certain typographical conventions in order to maintain an easily accessible and consistent layout. The styles contained in Table 2.1 and symbols noted below are used throughout the manual.

Table 2.1: Description of typographical styles used throughout this manual.

Style	Function	Example
Bold	important information, key words, headings,	Bold
Emphasis	GenICam™ features	AcquisitionComponentEnable
Italic	filenames	<i>helpfile.pdf</i>
Monotype	code	<code>perl -00 -pe ''</code>



Note

This symbol highlights important information to note.



Caution

Use of the CAUTION heading throughout this manual explains risks that are potentially harmful to either the product or personnel. These sections should always be read carefully and understood.

3 Install New StarForm Swift™ Firmware

The SwiftUpdater.exe installs the contents of a selected swift file to a StarForm Swift™ 3D camera. These files generally contain firmware updates or other improvements to camera operation. The steps below outline the operation of the SwiftUpdater.exe , which can be simply downloaded from www.odos-imaging.com.



Note

For more information please contact support@odos-imaging.com



Caution

If the installation of a firmware update is interrupted it is possible to leave the camera in a non-working state. Please ensure that the camera power supply is stable during the update procedure.

1. **Select File to Upload.** On startup SwiftUpdater.exe will ask for the *.swift* file to upload. The **File Open** dialog shows the text label from the selected *.swift* file (the user can choose to rename the file).
2. **Select Camera.** The next dialog allows the user to select the StarForm Swift™ camera for update. The dialog shows the list of detected StarForm Swift™ cameras on the current network and also allows the user to enter an IP address manually (e.g. when the internal firmware is not running on the StarForm Swift™ camera such that it cannot be found in the list, for example if power has been interrupted during update).
3. **Enter Update Key.** The next dialog asks for the camera specific update key. This key is provided on a per customer basis by Odos Imaging . Please contact support@odos-imaging.com if additional keys or support are required.

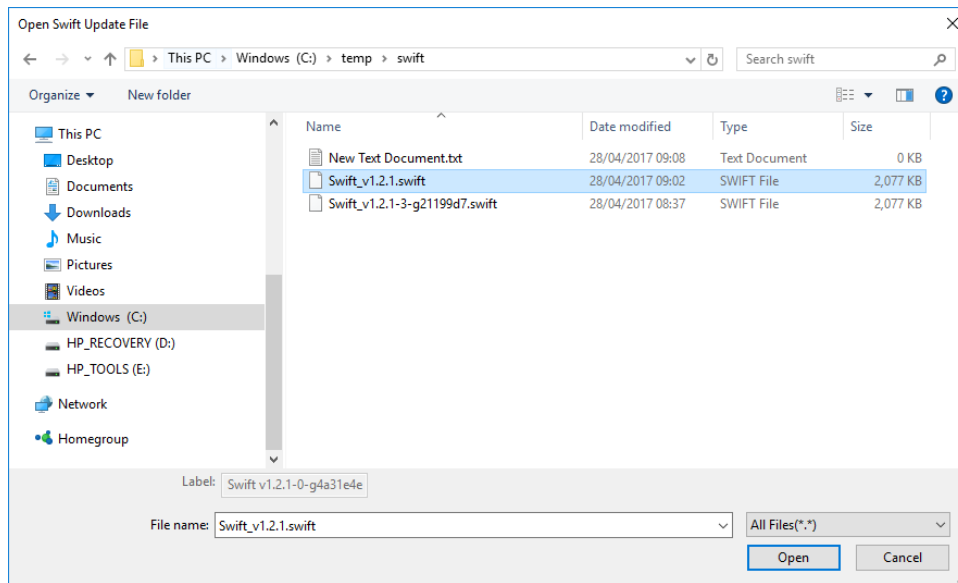


Figure 3.1: Step 1. Valid *.swift* selected showing label.

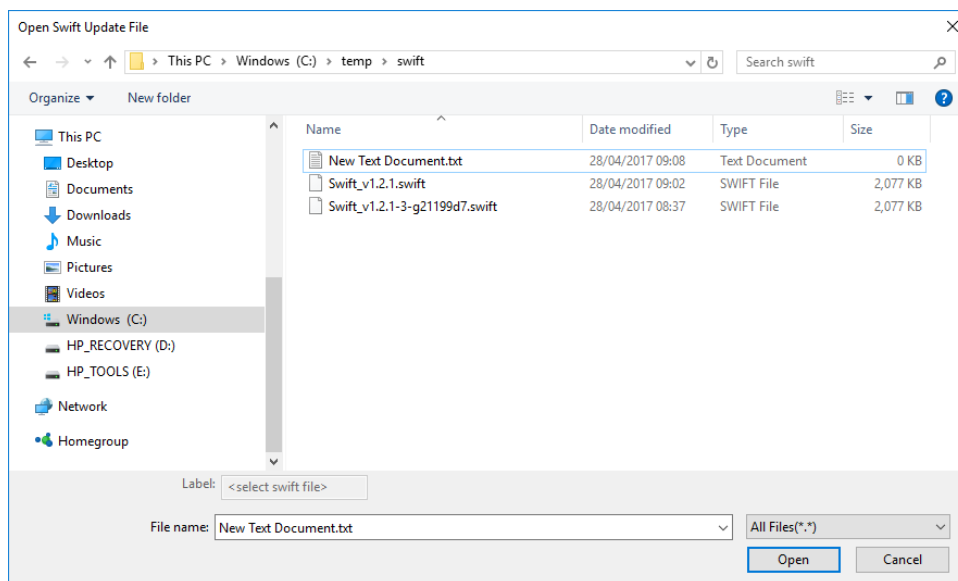


Figure 3.2: Step 1. No valid *.swift* selected.

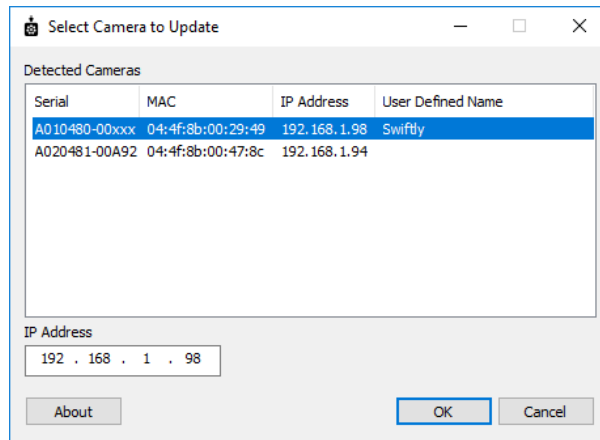


Figure 3.3: Step 2. Select the appropriate StarForm Swift™ camera for firmware update by IP address.

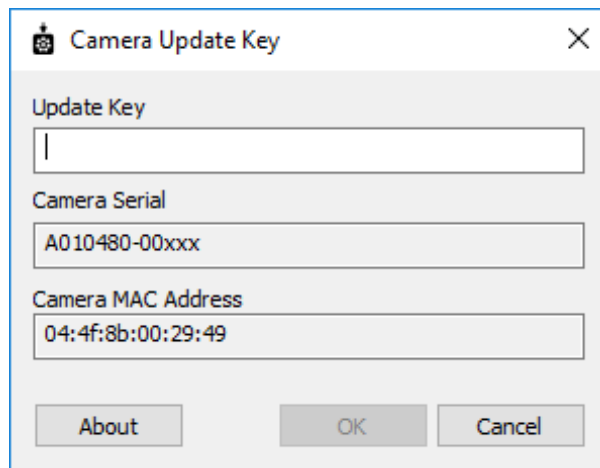


Figure 3.4: Step 3. Enter the update key as provided by Odos Imaging .

- 4. Upload.** The next dialog is the upload dialog. This uploads the *.swift* file, for installation on the camera. If the upload key is incorrect an error dialog is displayed and the **Details** text shows the update key was rejected. If the upload key is correct the file is uploaded and then installed on the camera. The **Details** text will update with progress eventually showing that the install was successful.

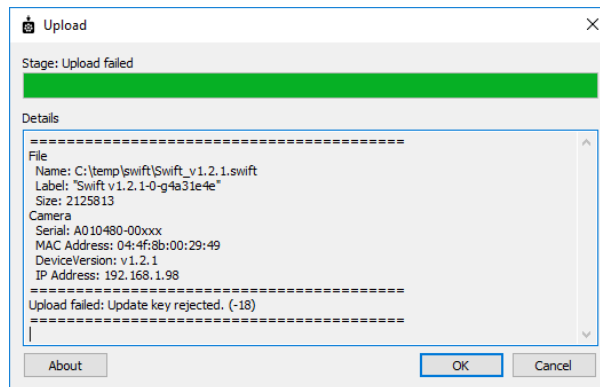


Figure 3.5: Step 4. Example of SwiftUpdater.exe output after entry of an incorrect or invalid update key.



The dialog can only be cancelled during the upload stage as the install must run to completion otherwise the camera may be left in a non-operational state.

- 5. Camera Restart.** During the firmware update, the internal firmware within the StarForm Swift™ camera is stopped. After the install has successfully completed the camera should be restarted (power-cycle) in order to start the new camera software.



It is important to power-cycle the StarForm Swift™ camera after the installation process has been successfully completed.

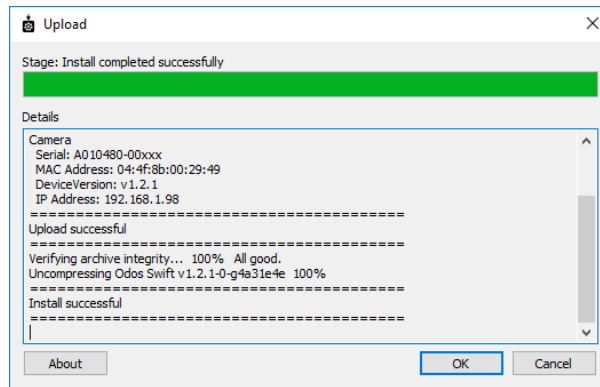


Figure 3.6: Step 4. Output from SwiftUpdater.exe on successful installation of updated firmware.

- 6. File Download.** Some *.swift* files may produce files from the camera. For example log files to be sent back to Odos Imaging for debug purposes. When these *.swift* files are opened the SwiftUpdater.exe will indicate if the user wishes to save the output. Should the user answers **Yes** then a file **Save as...** dialog will be shown.

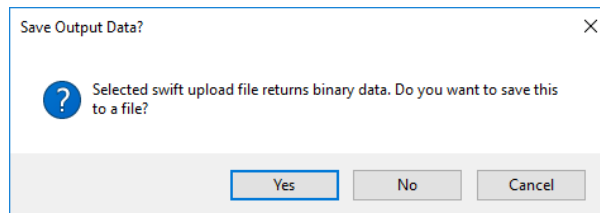


Figure 3.7: Optionally save the installation binary data for record and support requests.

4 Document History

Date	Version	Changelog
19.05.2017	0.1.0	First Release

Manual Build: 3f0c8d15b6bea72e1cd5679de4276ad971725bfa